

Fully Integrated Uniwell POS Management with ChipNet3

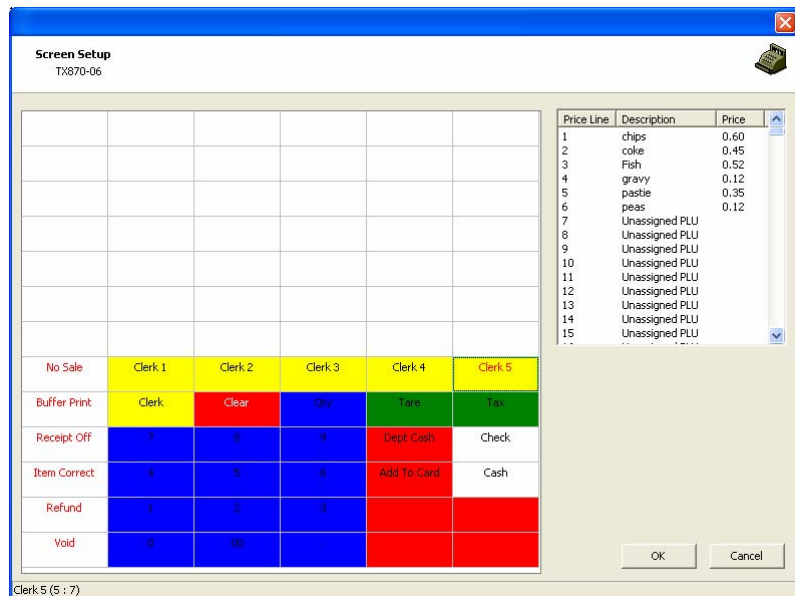


Description

Infiner have fully integrated a selection of terminals from Uniwell allowing the customer to choose from a range of high quality Point-of-Sale devices. The reliability and power of the Uniwell terminals combined with the flexibility of ChipNet3 presents the best solution on the market today.

With a range of touch screen and conventional units available, setting up the POS layout and managing your PLU list couldn't be easier. The ChipNet3 Uniwell Direct software module provides a simple and intuitive interface for managing both your POS and PLU list

For example the Uniwell TX range has a combined touch screen keyboard and display. The following screenshot shows the setup from within the ChipNet3 software. The keys that have pre-assigned text are fixed in both position and function; the remaining keys that are blank can be assigned any PLU from the PLU list. The PLU items can be dragged from the list on the right onto any blank key on the screen.



Once you are happy, all you need to do is download the settings to the terminal over the network, you can even set up each of your POS individually with a unique layout if required.

Any subsequent changes to a POS layout or to a PLU are automatically downloaded. Now you can run your entire POS fleet over the LAN from the comfort of your own office!

At the end of each sales session, as part of the normal POS log-off and shutdown sequence, the POS will automatically transfer all of the relevant data back to ChipNet. It's as simple as that.

The master PLU list can contain an unlimited number of items and Uniwell Direct has the capacity to manage as many different POS layouts as required.

Tax

Chipnet3 Uniwell Direct provides two ways of applying Tax to any purchase.

- A standard VAT method (UK) where a single definable level of tax is applied manually using a Tax button at the end of the transaction
- A multiple tax level method (US) where up to 4 definable levels of tax can be defined for each PLU and applied automatically during the transaction.

ChipNet3 – Putting Smartcards to Work!