

ChipNet3 Reporting Power



Description

Each time a card transaction takes place, all of the transaction details including the user's name, the items purchased, the prices paid, the time and the date are recorded by the Infeer terminal. These details are then relayed back to a central database where reports on card and sales activity can be generated. A range of standard reports is available divided into 5 groups:

Terminal

- Point of Sale PLU – Lists the amount and value of each item sold at each Point of Sale (POS) device
- Cash Totals – Lists the total cash deductions
- Group Payment – Lists group spending totals for each purse
- PLU by Department – Lists the items sold by each terminal group
- Vending Sales – Lists PLU sales from Vending Terminals
- Office Equipment Sales – Lists sales from office equipment such as photocopiers and network printers.
- Subsidy Totals – Lists the total of subsidy cash and transactions
- Terminal Payment – Lists the total spent per terminal

POS Summary

- Lists the total customers, refunds, cash transactions and card transactions for each POS device

User

- Card Balance – Lists the details and pure card totals
- Card History – Lists where, when and the amount spent for each card in the live database
- Historical Card History – Lists where and when and the amount spent for each card which has been deleted from the live database and moved to the historical database

Card Manager

- Revaluations – Lists the date, time and value of funds deposited using a revaluation point.
- Card Replaced – Lists all of the cards that have been replaced or reissued
- Card Dispensed – Lists all of the cards that have been dispensed from a Card Dispenser

Revaluation

- Revaluator Collection – Lists the dates and times that cash was collected from a revaluation device
- Queried – Lists possible queried transactions
- Revaluation Activity – Lists a breakdown of currency denominations collected
- Card Manager Revaluations – Lists a breakdown of revaluations processed through Card Manager

Meal & Value Plan

- Meal Plan Summary
- Value Plan Summary

Once selected ChipNet's database engine processes the report quickly and efficiently giving you the power to produce reports, at a time that suits you, from any administration PC!

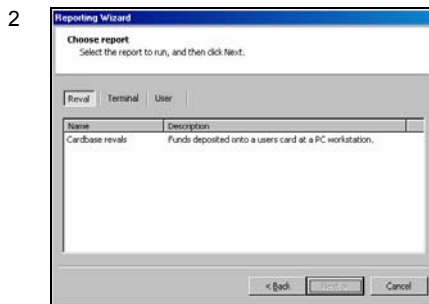
The simple report Wizard is demonstrated below:



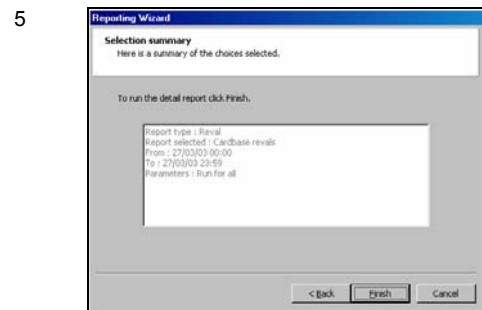
1 Select the report Wizard from the Task pad.



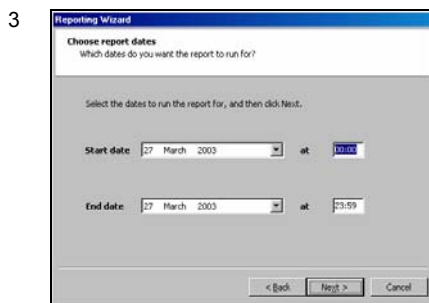
4 Focus your report with further selection filters



2 Choose the report from the available list.



5 The selection summary shows the parameters that will apply for your report



3 Select the reporting period



6 The final report can be viewed on screen, printed or exported to 3rd party software

Most reports can be further defined by selecting specific Dates; Terminals & Terminal Groups; Users & User Groups and Display Details. ChipNet also offers the facility to export these reports to external accounting and payroll packages if required. Since ChipNet uses Crystal Reports as the report engine custom reports can be constructed to meet the customer's specific reporting needs.

ChipNet3 – Putting Smartcards to Work!