

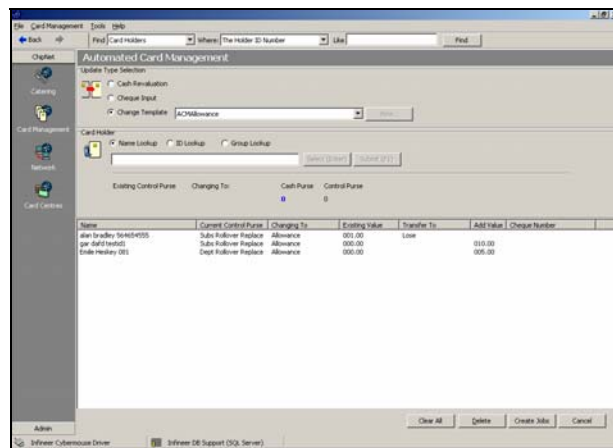
Control your Cards Remotely with Automated Card Management (ACM)



Description

Traditional smartcard systems required the card to be returned to the administrator if any changes or upgrades to the cardholder's profile had to be made. For large campuses this could be a major disadvantage if changes were required on a regular basis.

ChipNet3 has harnessed the power of the TCP/IP network to provide a unique method of supplying card updates without losing the off-line power of the ChipNet solution.



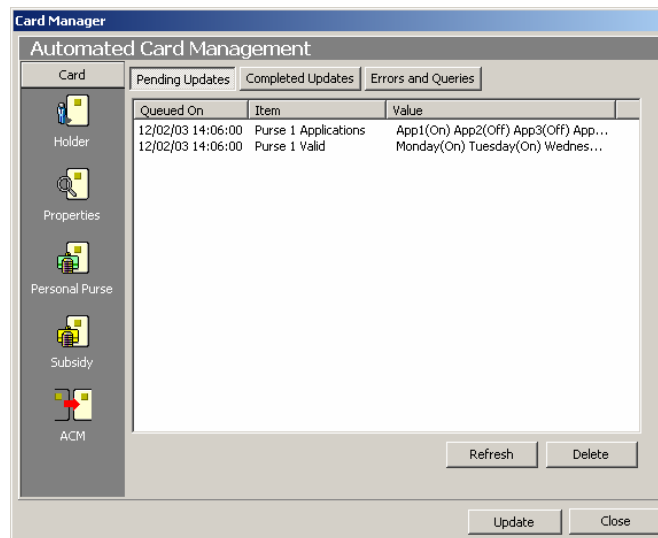
Using the ACM module the authorized administrator can select a user or group of users and then select the change they want to make. This may be: A structural change to the card template, such as moving a cardholder to a different Group; Assign or transfer value to a purse balance or add and remove a subsidy or benefit.

The ACM module then transfers these changes to a "to-do" list. Each time a card is entered into an ACM enabled TCP/IP terminal the terminal will question the to-do list and check if there is an update. If there is then this update is performed discretely in the background.

If the TCP/IP link is broken or there is a problem with the network, then ChipNet's powerful off-line capacity is still retained. Using the current on-card permissioning profile and purse records the cardholder can still use his card. The update simply remains in the queue and will be granted the next time the card is presented at an enabled terminal.

It is recommended that for the most efficient application of ACM the site should install the TCP/IP version of all terminals. In this way updates will be distributed in the timeliest manner. Also, if there is the possibility of a change happening that might have a negative benefit for the cardholder, such as removing a cardholder from a subsidy scheme, it will ensure that the cardholder cannot avoid this change during their daily use of the system.

However, for sites with minimum network capacity it is possible to install dedicated TCP/IP update terminals in a system that might not employ or employ RS485 networking for the majority of the terminals.



Cardholders personal profile window

The administrator can see in the ACM module window, which changes are outstanding and pending changes are also displayed in the cardholder's personal profile window.

A record is also kept of updates and changes to the card throughout its lifecycle.

Examples of ACM in use:

Schools – Parents can send in a Cheque rather than cash and the school administrator can load the value onto the pupil's card using ACM.

Universities – Easily transfer students from one administration group to another or adjust a student's rights and privileges

Corporate – The administrator can grant a staff member funds to entertain visitors in the staff cafeteria

ChipNet3 – Putting Smartcards to Work!