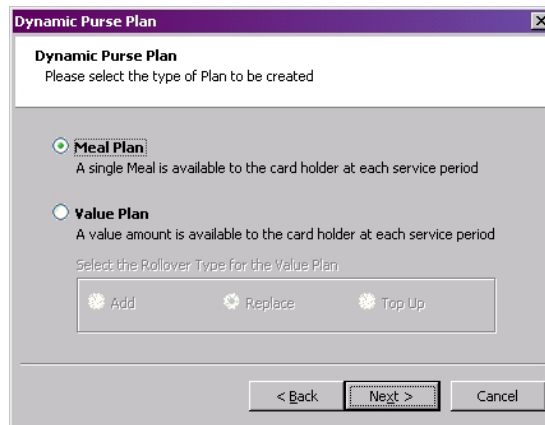


Using the ChipNet3 Meal Plan



Introduction

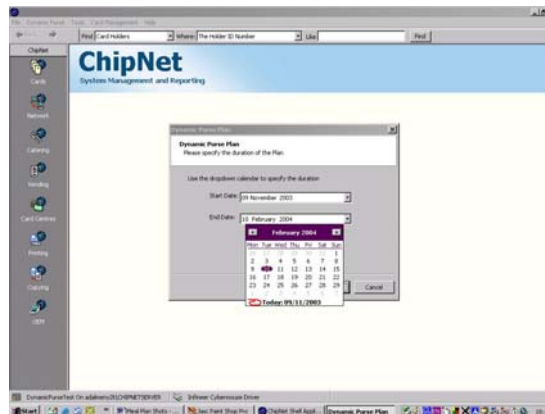
The ChipNet3 Dynamic Purse is a powerful tool that the catering administrator can use to provide flexible payment options for their food service outlets. The Dynamic Purse Wizard allows us to configure a Service Timetable for either a Meal Plan or a Value Plan.



This datasheet will concentrate on the Meal Plan functionality and describes how simple it is to set-up a Service Timetable, define individual Meal Plan Templates in preparation for the allocation of plans to cardholders. The first screen of the wizard allows the administrator to select which type of service timetable they want to create. There is no limit to the number of

timetables that can be created and as we shall see, it is a simple task to edit service timetables once they have been created.

Service Timetable



The first task is to select a date range for your service timetable, you can set any range you like with the simple to use rolling calendar.

The wizard will then allow you to define the limits and operational characteristics of the timetable.

For example a university catering administrator could set up a timetable for an entire academic year or a single semester, with each eligible meal period fully configurable.

In a matter of minutes, the administrator will be ready to start creating individual Meal Plans based on the service timetable.

Configuring the Service Timetable

Dynamic Purse Plan

Specify a Name
Please assign a name to identify the plan

Specify a name for the Plan (Max 50 characters)

Meal Plan

< Back Next > Cancel

Service timetables can be given a name so that they can be readily identifiable.

There is no limit to the number of service timetables that can be created!

Dynamic Purse Plan

Weekly Meal allocations
Specify weekly meal options

Option 1: 5 Meals Per Week
Option 2: 10 Meals Per Week
Option 3: 15 Meals Per Week

The reset day is: Sunday

< Back Next > Cancel

Individual Meal Plans derived from the service timetables can be restricted to cap the number of meals available per week.

The wizard allows the administrator to configure weekly cap limits and define the “roll over” day.

Dynamic Purse Plan

Terminal Prompts
Prompts to be displayed at POS when in active service period

Prompts

Balance Display: Meal Plan
Prompt Line 1: Use Meal Plan?
Prompt Line 2: Yes/No

Insert Variable
Remaining Meals <RM>
Current Period Cash Balance
Total Plan Cash Balance <PB>

< Back Next > Cancel

ChipNet3 also allows the administrator the ability to define how the POS terminal will display information when a card is presented and customise information, if required.

Prompt Preview

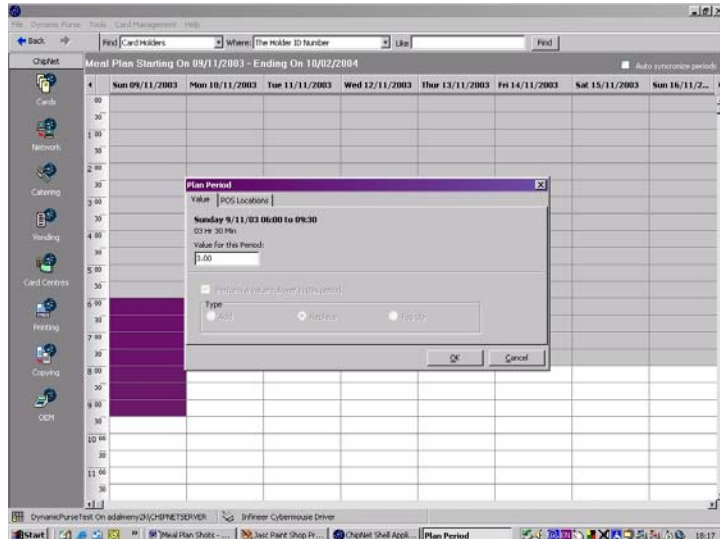
THE CAFE
USE YOUR PLAN
YES/NO

Close

The administrator can even preview the terminal screen from the software.

Service Timetable - Valid Time Periods

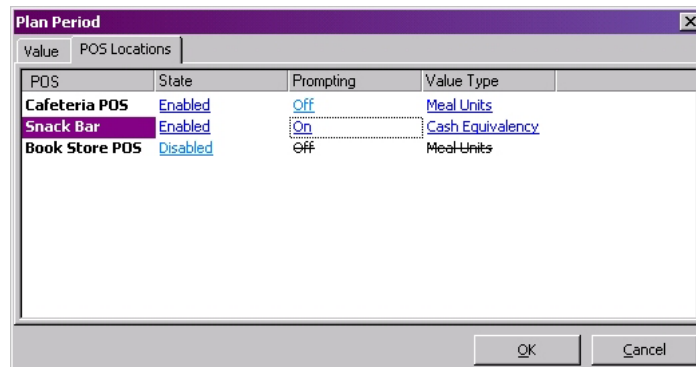
The wizard will then allow the administrator to define a master matrix of time periods for their plan.



Time Periods

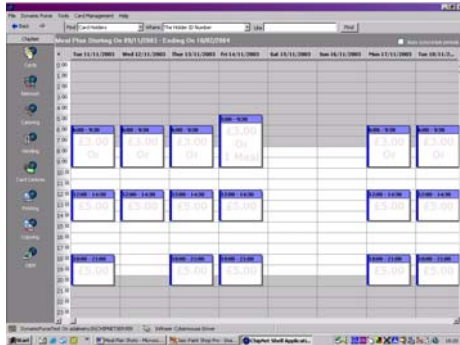
Each defined period has its own dialogue box, which allows a value to be associated with the period as well as allowing the administrator to establish which POS devices can be used.

For each time period the administrator can choose:



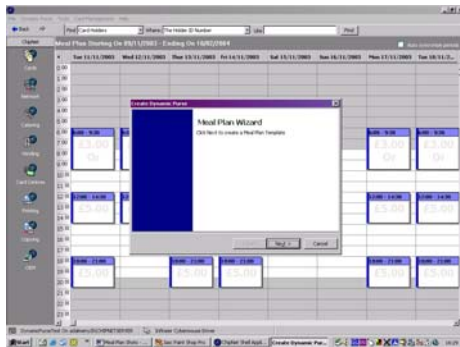
- Which POS devices use Meal Units or Cash Equivalency
- The Cash Value of the meal
- If the purse is used automatically or prompted

The administrator can set up each time period individually or can copy periods across the entire service timetable. Once established, each time period can be adjusted or edited to suit specific holidays or opening times.



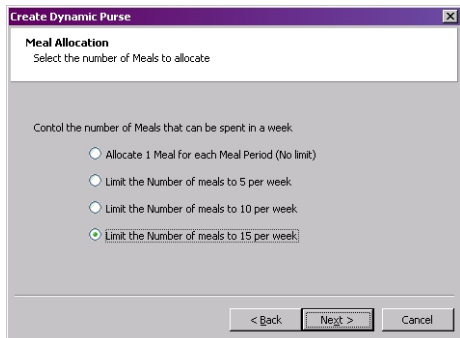
The Completed Service Timetables

The Plan Wizard allows the administrator to set up and define their master plans quickly and efficiently. Once created they can be easily edited and maintained.



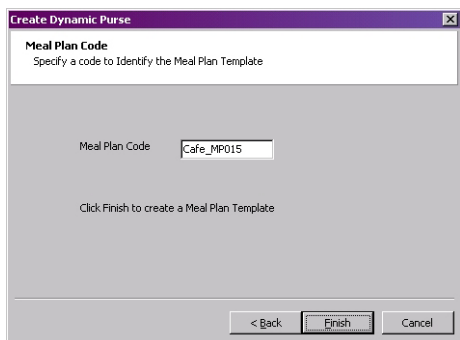
Creating Individual Meal Plan Templates

Individual Meal Plans can then be created which work in association with the service timetables. Once these are defined, then it is a simple matter to allocate these to cardholders as required.



Defining the Meal Plan Limits

The number of weekly meals can be capped for each individual Meal Plan using the options defined in the service timetable or the Plan can drawdown from a fixed pool of meals with each period valid.



Meal Plan Template Code

Each Meal Plan can be identified with a user defined Meal Plan Code

Note: Once the Service Timetables and the Meal Plan Templates have been created the administrator can use the ChipNet3 Task Pad to assign Meal Plans to individual cardholders using another simple wizard.

Service

Timetable

Summary

- Choose Meal Plan or Value Plan
- No limit to number of timetables that can be created
- Choose start & end dates for timetable
- Configure valid time periods
- Configure weekly cap options
- Configure POS Terminals
 - Display properties
 - Meal units or cash equivalency
 - Automatic/prompted purse acceptance
- Powerful Editing Tools
 - Maintain timetables, delete old dates, extend date ranges
 - Change POS acceptance and pricing
 - Modify time periods

Meal Plan

Summary

- Define Meal Plan Code
- Choose weekly cap or drawdown

Technical

Requirements

- Dynamic Purses can be used with the following Infeer POS devices:
 - 8650 TCP/IP POS
 - Uniwell POS & 8652 TCP/IP Payment Terminal
- Dynamic Purses require an Ethernet connection to be maintained between ChipNet and participating POS devices.

ChipNet3 – Putting Smartcards to Work!